

Jorid's Christmas Heart

Socks

Design: Jorid Linvik

This pattern was a gift from Jorid's Pattern Shop (www.joridweb.com)
The pattern is distributed in PDF format, and may not be distributed,
published or sold without the express permission of the owner.
© 2014 Jorid Kunst og Design

Information:

Suggested yarn: Sisu Superwash from Sandnes. White, red and blue, 1 ball of each color.

Gauge for this yarn is 27 sts = 10 cm / 4 in. Using this yarn and needles the socks will be a medium ladie's size.

Needles: set of DPNs nr 3 (US 2 ½).

If you want a larger size, use a yarn with a gauge 23 - 24 sts = 10 cm / 4 in.

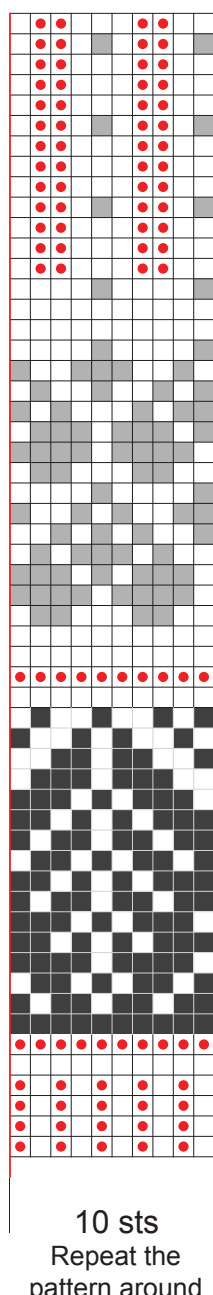
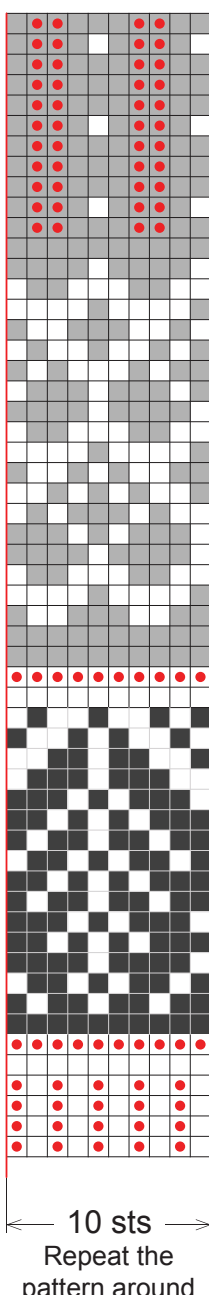
For a smaller size use needles 2 ½ (US 1 ½)

Key to charts:

	Blue	Red	White	
				Knit stitch
				Purl stitch
Decreases				Knit 2 together
				Slip 1, knit 1, pass slipped stitch over
				Pick up 1 stitch
				Slip stitch
sts = stitches, rnd = round				

Red sock

White sock

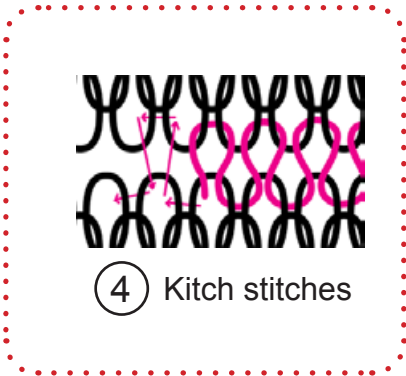
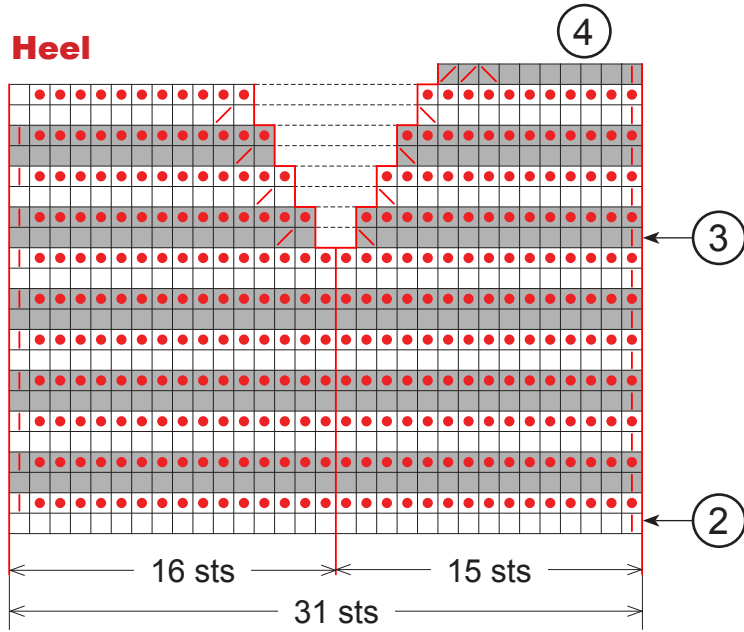


Instructions:

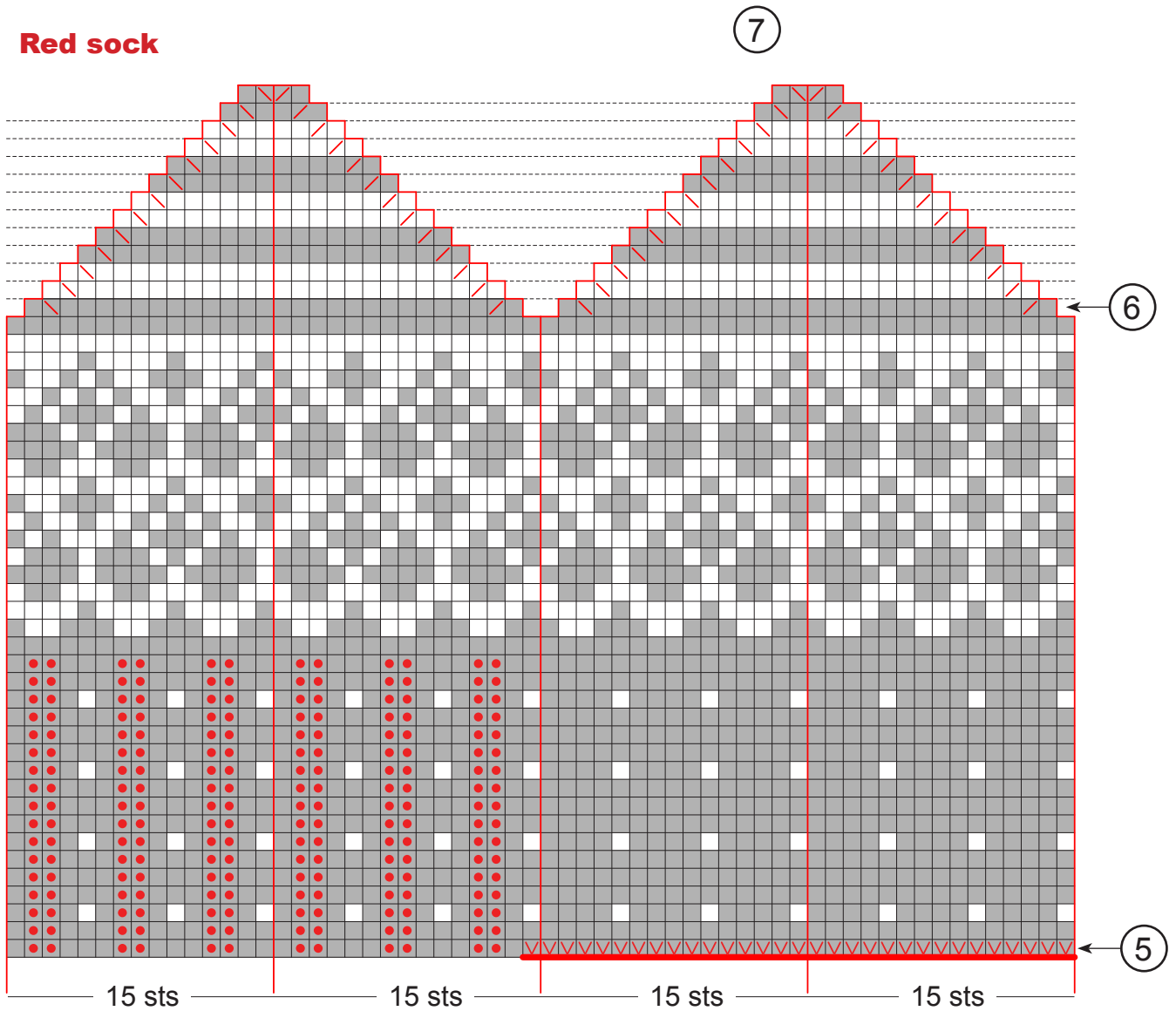
1. Cast on 60 sts with white color, distribute on 4 needles and join in a ring. Continue from the chart on this page for white or red socks.
2. Heel: (The heel is alike for both red an white socks) knit in stockinette (knit outside, purl inside of the heel) back and forth over the next 31 sts. The rest of the sts are waiting on their needles until the heel is finished. Slip first stitch in each row according to chart.
3. Start decreases.
4. Fold the heel together along the middle and using the end of the red yarn, kitchener together the red and the white sts on each side.
5. Continue from the foot chart on page 3 or 4. Pick up and knit 15 sts along the edge of the heel to the middle and 15 sts from the middle to the other side of the heel. (Start at top left side of the heel). Pick up 1 sts in side, then continue over the 29 waiting sts.
6. Start decreases.
7. Pull the yarn end through the last 8 sts.
8. Weave in all loose ends on the inside.



Heel



Red sock



White sock

